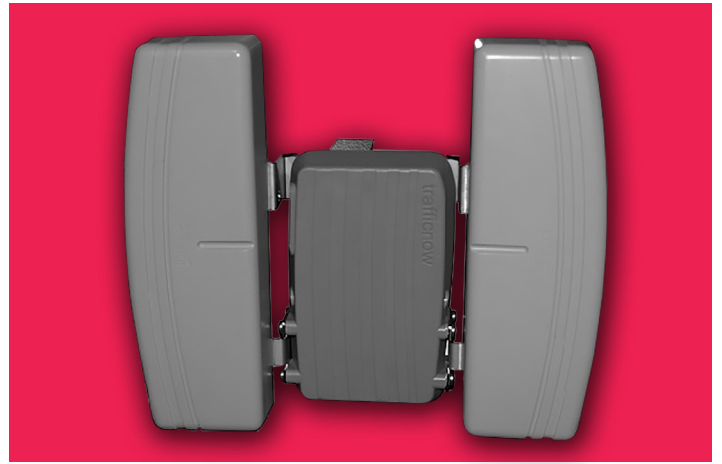


DeepBlue

Sensor v2t D-Model



The DeepBlue Sensor v2t D-model by trafficnow® - a unique dual channel Bluetooth® sensor deploying two powerful antennas for real side fire operation. Specially designed antennas for extreme sensitivity, longer range and faster scanning; for enhanced detection of fast moving vehicles in up to 12 lanes.

A multi-lane, auto-configured, easy-to-install side-fire Sensor that detects the Bluetooth® signals from vehicles; from hands free sets, mobile telephones and navigation systems.

The ideal sensor for getting online travel time information and origin/destination information for improved infrastructure planning.

Suitable for the inter-urban environment.

BENEFITS

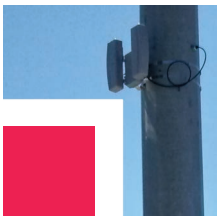
- Side-fire; zero set-back
- Field proven technology
- Cost-effective solution for traffic management
- Easy to install and configure
- Each installed unit has the flexibility of performing a variety of tasks

FEATURES

- Automatic detector configuration
- Multi-lane, side-fire sensor
- Vehicle Detection and Tracking
- Recognition of Unique Identification for White list applications
- Incident Detection / Travel time
- Non-volatile memory data storage
- Self test on power-up (LED indicator)
- Low power consumption
- Fast, reliable and secure data transmission

APPLICATIONS

- Travel time
- Online web based applications
- Traffic Engineering (O/D matrices)



DeepBlue Sensor D-Model

SPECIFICATION

Power

- 12 to 48 VDC
- Min 2.20W (configuration dependent)
- PoE (Power over Ethernet)

CPU

- ARM 9 Processor

Memory

- 128 MB RAM/Flash
- Micro SD storage

Communications

- Ethernet connector
- Optional 3G/CDMA worldwide
- Dual SIM card slot
- Remote sensor access
- Optional general purpose IO

Operations

- Linux based OS
- LED for operations diagnostics

Environmental:

- -22° F to +176° F (-30° C to +80° C)
- 0 to 90% relative humidity
- IP65 housing

Dimensions and Weight

- H x W x L
13.3 in x 16.3 in x 5.9 in
(337 mm x 413 mm x 150 mm)
- 5.8 lbs (2.65 kg) including stainless steel brackets

Bluetooth

- Dual channel operation
- Two side-mounted antennas
- 110° horizontal angle; 30° vertical angle
- Detects all Bluetooth® versions
- More than 500 meters range
- -104dB receive sensitivity

WiFi

- Optional WiFi detection

Regulatory

- RoHS Compliant
- FCC
- CE certified

CONTACTS

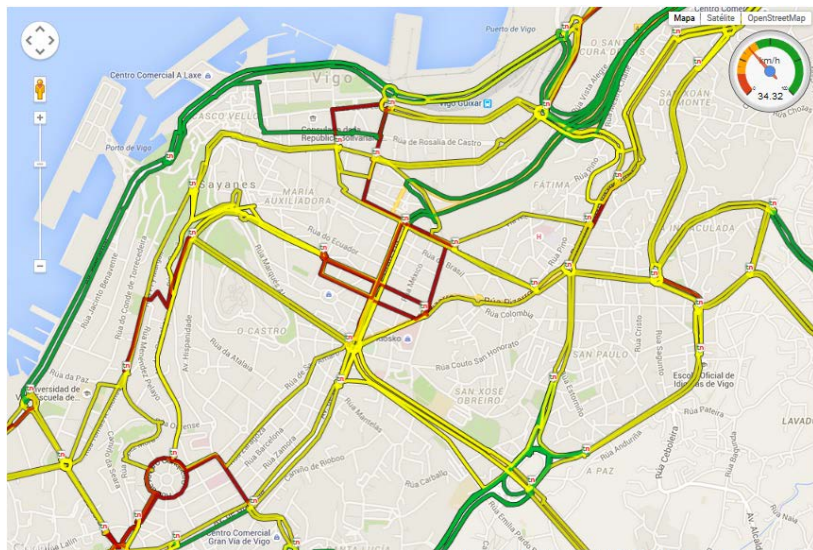
World Headquarters

500 Spruce Tree Centre
1600 University Avenue West
St. Paul, MN 55104 USA
Phone: +1.651.603.7700
Fax: +1.651.305.6402
info@imagesensing.com
imagesensing.com

Image Sensing Systems Canada

150 Bridgeland Avenue
Suite 204
Toronto, ON M6A 1Z5
Canada
Phone +1.416.785.9248
Fax +1.416.785.9332
sales@imagesensing.com
imagesensing.com

Speed Map



Precision decisions.

imagesensing.com

Due to ISS' continuous efforts to develop the products that are most responsive to our customers needs, the above specifications are subject to change. To verify the current information, please visit the Image Sensing Systems website.

©2016 Image Sensing Systems, Inc. Part Number: 3110-1 Rev 160128