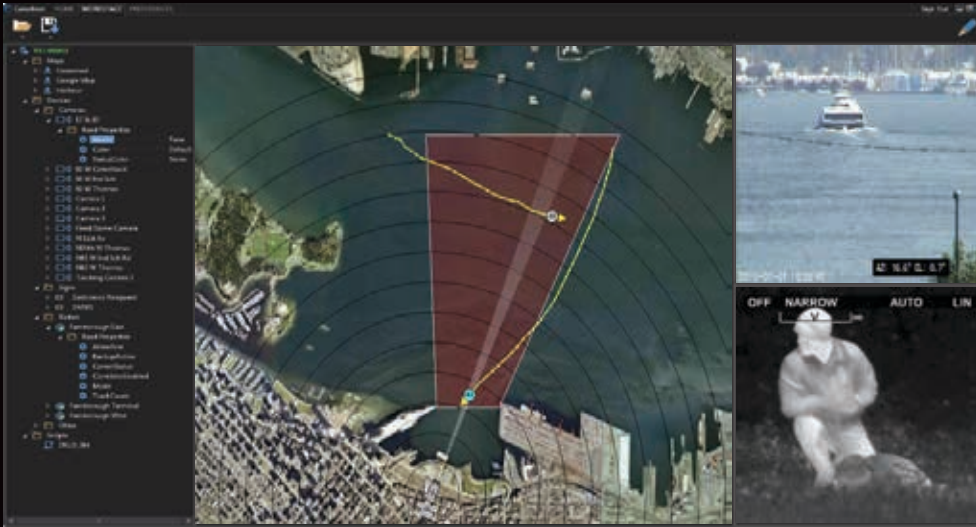
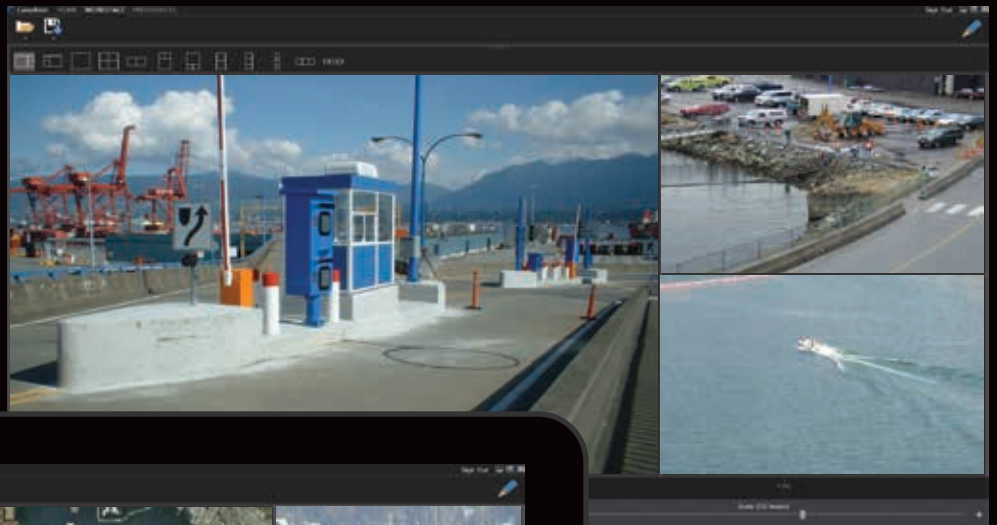




cameleon

VERSION 5



Version 5 is the next generation Cameleon platform for the integration of multiple devices, systems and sensors into a common operating picture. Cameleon's strength for creating custom solutions utilizing the standard out-of-the box package is further enhanced with a completely updated user interface. New features like multilingual support, advanced mapping and workspace management have also been added. Cameleon has always been known as an industry workhorse for device control, automation and flexibility; now it's even easier to configure and use.

NEW FOR V5

DASHBOARD

Completely updated dashboard style user interface. Modern look and feel. User interface components have customizable font sizes for ease of use. All aspects of the workspace are remembered.

TRANQUIL THEME

Dark theme for a more pleasant visual experience, especially in a command center environment. Icons updated to improve usability.

MULTILINGUAL

Dynamic, on-the-fly language selection. Support for multiple languages.

EXPANDED MAPPING CAPABILITY

Support for many new mapping formats, including new features such as map rotation, moving maps and layering. Embed static maps, such as building floor plans.

INTELLIGENT DEVICE LIST

More levels of organization to make complex systems easy to navigate. Devices are now organized by type and location. Device properties are displayed and dynamically update. New filters let you remove unwanted device types, maps or scripts from the Device List to reduce clutter and increase usability. Easily find the device you're looking for.

SIMPLIFIED ARCHIVE VIDEO INTERFACE

Intuitive archive video interface allows operators to easily find the clip they want.

ROBUST MULTI-SERVER SUPPORT

Robust multi-server connectivity and dynamic connect/disconnect for servers. Easily specify primary and backup servers on login. Client is updated seamlessly on server save. Operators continue to work undisturbed.

INTELLIGENT VIDEO WINDOWS

Context-sensitive video window grids. Change a single video window into a grid of windows with one click. Available layouts are pre-determined based on the aspect ratio of the display screen.

SYNCHRONIZED PLAYBACK

Synchronized video playback for up to four streams at once.

POWERFUL SEARCH CAPABILITIES

Globally search for any item in maps, device list, session manager, etc. Targeted search bars look only in specific tables. Find exactly what you're looking for in no time.

WORKSPACE TEMPLATES

Built in template workspaces. Pick one instead of building your own. Or use a template as the first step in designing your custom workspace.

COOPERATION

Component cooperation allows the whole interface to react intelligently to a single click. For example, clicking on a camera moves the map to its location and loads its video.

VIDEO OVERLAY

Custom text in any live video window. Add the date/time, camera description or any other variable.

TABLETS AND TOUCH SCREENS

Support for specific tablets and laptop touchscreens.

ACCESSIBLE PROMPTS

Prompts are now also shown in the Session Manager.

RESOLUTION INDEPENDENT WORKSPACES

Any workspace may be used on any monitor size.

ENHANCED WORKSPACE FUNCTIONALITY

Drag and drop window content. Add tabs to any workspace or window. Quickly collapse tabs to maximize the available screen space. Lock windows in place, or allow operators to resize them. Quickly split a single window in two. Repeat this process to quickly create a grid. Drag windows into common, useful sizes; or create any custom size.

API

API available for integration with third party systems.

SOFTWARE ASSURANCE

When you participate in a Cameleon Software Assurance program, you get the combined experience of the entire FLIR team. Our commitment to customer service is evidenced in our helpful and friendly expert staff, ready to walk you through any problem you may have. Priority technical support, remote configuration assistance and dedicated developers are available to all Cameleon Software Assurance program members.



4218 Commerce Circle
Victoria, BC V8Z 6N6 Canada
PH: + 1 888 242 4291
PH: + 1 250 388 7232